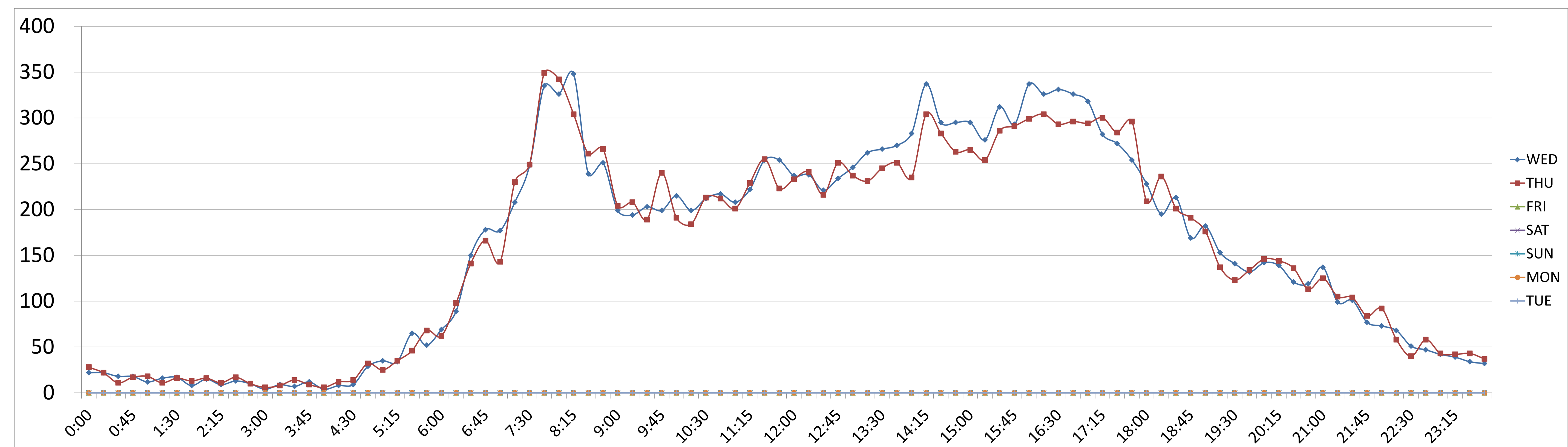
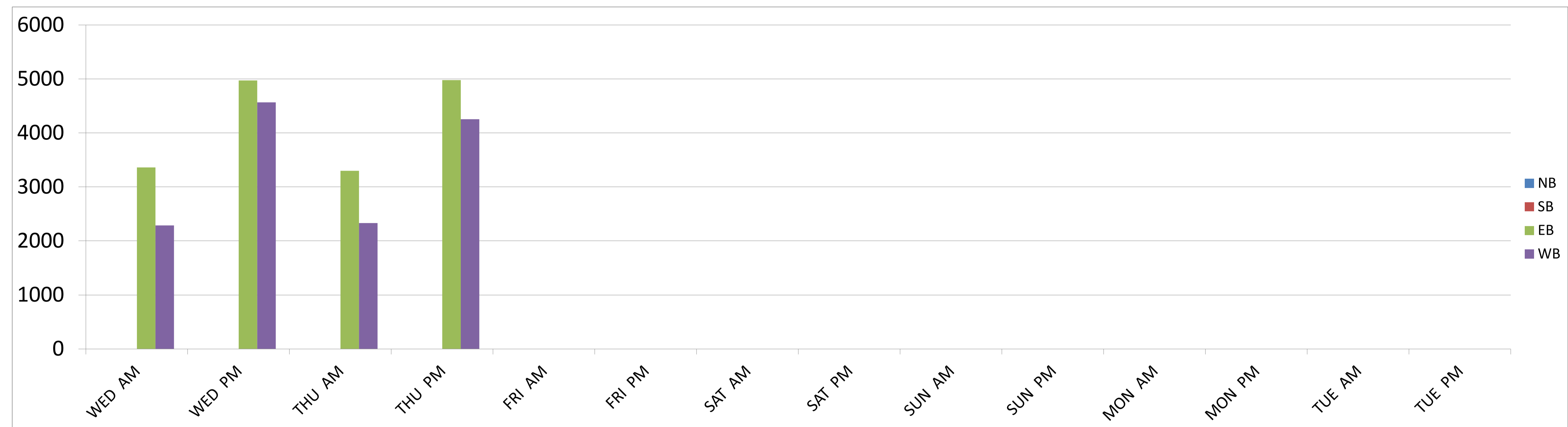


Average Daily Traffic Volumes Quality Traffic Data, LLC

QTD PROJ/LOC #:	700308 - 033	GPS COORDINATES:	N/A
ON STREET:	Rumrill Blvd	START DATE:	Wednesday, January 23, 2013
CROSS STREETS:	between 19th St and 20th St	VICINITY:	City of San Pablo, CA



QUALITY TRAFFIC DATA, LLC

9701 W Pico Blvd, Suite 205, Los Angeles, CA, 90035

Phone: 310-341-0019 Fax: 310-807-9247 Info@QualityTrafficData.com

Average Daily Traffic Volumes

Quality Traffic Data, LLC

QTD PROJ/LOC #:	700308 - 033	GPS COORDINATES:	N/A
ON STREET:	Rumrill Blvd	START DATE:	Wednesday, January 23, 2013
CROSS STREETS:	between 19th St and 20th St	VICINITY:	City of San Pablo, CA

AM COUNTS						PM COUNTS									
NB		SB		EB		WB		NB		SB		EB		WB	
00:00				8			14	12:00				141			96
00:15				12			10	12:15				134			104
00:30				7			11	12:30				132			89
00:45				10	37	8	43	12:45				132	539	102	391
01:00				6			6	13:00				140			106
01:15				7			9	13:15				155			107
01:30				9			8	13:30				145			121
01:45				6	28	2	25	13:45				149	589	121	455
02:00				3			12	14:00				150			133
02:15				5			4	14:15				211			126
02:30				6			7	14:30				175			120
02:45				6	20	4	27	14:45				160	696	135	514
03:00				1			3	15:00				165			130
03:15				8			1	15:15				124			152
03:30				5			2	15:30				159			153
03:45				8	22	4	10	15:45				144	592	149	584
04:00				3			1	16:00				172			165
04:15				6			2	16:15				168			158
04:30				5			4	16:30				156			175
04:45				21	35	8	15	16:45				167	663	159	657
05:00				15			20	17:00				154			164
05:15				20			14	17:15				157			125
05:30				52			13	17:30				156			116
05:45				37	124	15	62	17:45				141	608	113	518
06:00				39			30	18:00				134			94
06:15				49			40	18:15				115			80
06:30				86			64	18:30				122			91
06:45				103	277	75	209	18:45				84	455	85	350
07:00				98			79	19:00				87			95
07:15				122			86	19:15				73			80
07:30				129			119	19:30				63			78
07:45				183	532	152	436	19:45				54	277	78	331
08:00				176			150	20:00				54			88
08:15				221			127	20:15				46			93
08:30				159			80	20:30				56			65
08:45				161	717	90	447	20:45				49	205	70	316
09:00				125			74	21:00				65			72
09:15				128			66	21:15				44			55
09:30				115			88	21:30				42			59
09:45				130	498	69	297	21:45				30	181	47	233
10:00				127			88	22:00				31			42
10:15				124			75	22:15				31			37
10:30				128			84	22:30				24			27
10:45				128	507	89	336	22:45				15	101	32	138
11:00				131			77	23:00				20			22
11:15				129			93	23:15				15			24
11:30				146			108	23:30				13			21
11:45				154	560	100	378	23:45				19	67	13	80
TOTALS:				3357		2285	5642	TOTALS:				4973		4567	9540

SPLIT	59.5%	40.5%	37.2%	SPLIT	52.1%	47.9%	62.8%
PEAK HOUR	07:45	07:30	07:30	PEAK HOUR	14:15	16:00	16:00
PH VOLUME	739	548	1257	PH VOLUME	711	657	1320
PHF	0.84	0.90	0.90	PHF	0.84	0.94	0.98

DAY'S TOTAL					
NB	SB	EB	WB	TOTAL	
		8330	6852	15182	



QUALITY TRAFFIC DATA, LLC

9701 W Pico Blvd, Suite 205, Los Angeles, CA, 90035

Phone: 310-341-0019 Fax: 310-807-9247 Info@QualityTrafficData.com

Average Daily Traffic Volumes Quality Traffic Data, LLC

QTD PROJ/LOC #:	700308 - 033	GPS COORDINATES:	N/A
ON STREET:	Rumrill Blvd	START DATE:	Thursday, January 24, 2013
CROSS STREETS:	between 19th St and 20th St	VICINITY:	City of San Pablo, CA

AM COUNTS					PM COUNTS				
NB	SB	EB	WB		NB	SB	EB	WB	
00:00		9	19		12:00		147	86	
00:15		9	13		12:15		148	93	
00:30		5	6		12:30		121	95	
00:45		9	32	8	12:45	558	109	383	941
01:00		7	11		13:00		117	120	
01:15		7	4		13:15		134	97	
01:30		9	7		13:30		137	108	
01:45		7	30	6	13:45	522	117	442	964
02:00		7	9		14:00		141	94	
02:15		6	5		14:15		189	115	
02:30		10	7		14:30		192	91	
02:45		5	28	5	14:45	673	112	412	1085
03:00		4	2		15:00		157	108	
03:15		7	1		15:15		148	106	
03:30		12	2		15:30		172	114	
03:45		3	26	6	15:45	634	134	462	1096
04:00		3	3		16:00		158	141	
04:15		8	4		16:15		178	126	
04:30		10	4		16:30		157	136	
04:45		27	48	5	16:45	647	142	545	1192
05:00		13	12		17:00		168	126	
05:15		17	18		17:15		180	120	
05:30		28	18		17:30		155	129	
05:45		48	106	20	17:45	658	141	516	1174
06:00		42	20		18:00		110	99	
06:15		47	51		18:15		129	107	
06:30		85	56		18:30		108	93	
06:45		94	268	72	18:45	443	95	394	837
07:00		78	65		19:00		88	88	
07:15		121	109		19:15		48	89	
07:30		138	111		19:30		59	64	
07:45		195	532	154	19:45	247	82	323	570
08:00		181	161		20:00		62	84	
08:15		194	110		20:15		51	93	
08:30		161	100		20:30		60	76	
08:45		150	686	116	20:45	226	60	313	539
09:00		128	76		21:00		50	75	
09:15		133	75		21:15		40	65	
09:30		101	88		21:30		45	59	
09:45		145	507	95	21:45	166	53	252	418
10:00		121	70		22:00		44	48	
10:15		118	66		22:15		32	26	
10:30		121	92		22:30		14	26	
10:45		132	492	80	22:45	118	30	130	248
11:00		121	80		23:00		21	22	
11:15		138	91		23:15		25	17	
11:30		150	105		23:30		19	24	
11:45		133	542	90	23:45	82	20	83	165
TOTALS:		3297	2328	5625	TOTALS:		4974	4255	9229

SPLIT	58.6%	41.4%	37.9%	SPLIT	53.9%	46.1%	62.1%
PEAK HOUR	07:45	07:30	07:45	PEAK HOUR	14:15	16:00	16:00
PH VOLUME	731	536	1256	PH VOLUME	689	545	1192
PHF	0.94	0.83	0.90	PHF	0.90	0.96	0.98

DAY'S TOTAL				
NB	SB	EB	WB	TOTAL
		8271	6583	14854



QUALITY TRAFFIC DATA, LLC

9701 W Pico Blvd, Suite 205, Los Angeles, CA, 90035

Phone: 310-341-0019 Fax: 310-807-9247 Info@QualityTrafficData.com