



SAN PABLO POLICE DEPARTMENT

Monthly Statistics
September 2016



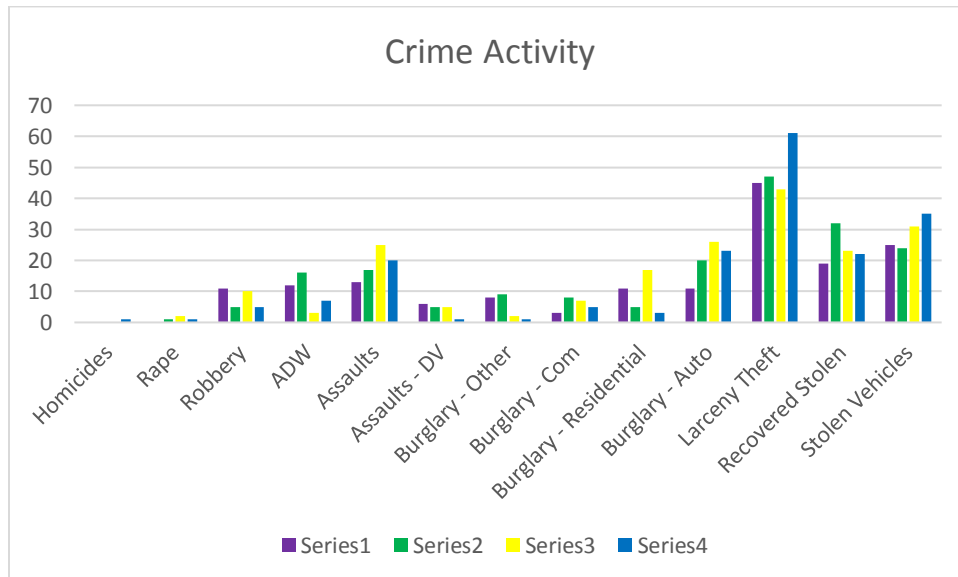
Part 1 Crimes

MAJOR CRIMES

	Sept 2013	Sept 2014	Sept 2015	Sept 2016	YTD 15	YTD 16	% Change
Homicides	0	0	0	1	0	1	0%
Rape	0	1	2	1	8	19	138%
Robbery	11	5	10	5	82	62	-24.390%
ADW	12	16	3	7	77	76	-1.299%
Assaults	13	17	25	20	212	189	-10.849%
Assaults - DV	6	5	5	1	49	38	-22.449%
Burglary - Other	8	9	2	1	12	15	25.000%
Burglary - Com	3	8	7	5	47	77	63.830%
Burglary - Residential	11	5	17	3	93	51	-45.161%
Burglary - Auto	11	20	26	23	211	158	-25.118%
Larceny Theft	45	47	43	61	348	413	18.678%
Recovered Stolen	19	32	23	22	258	259	0.388%
Stolen Vehicles	25	24	31	35	305	292	-4.262%
YTD Crime Totals					1,702	1,650	-3.055%

****Information is time sensitive and subject to change upon further analysis****

****Numbers are subject to change and may not match UCR reported stats****



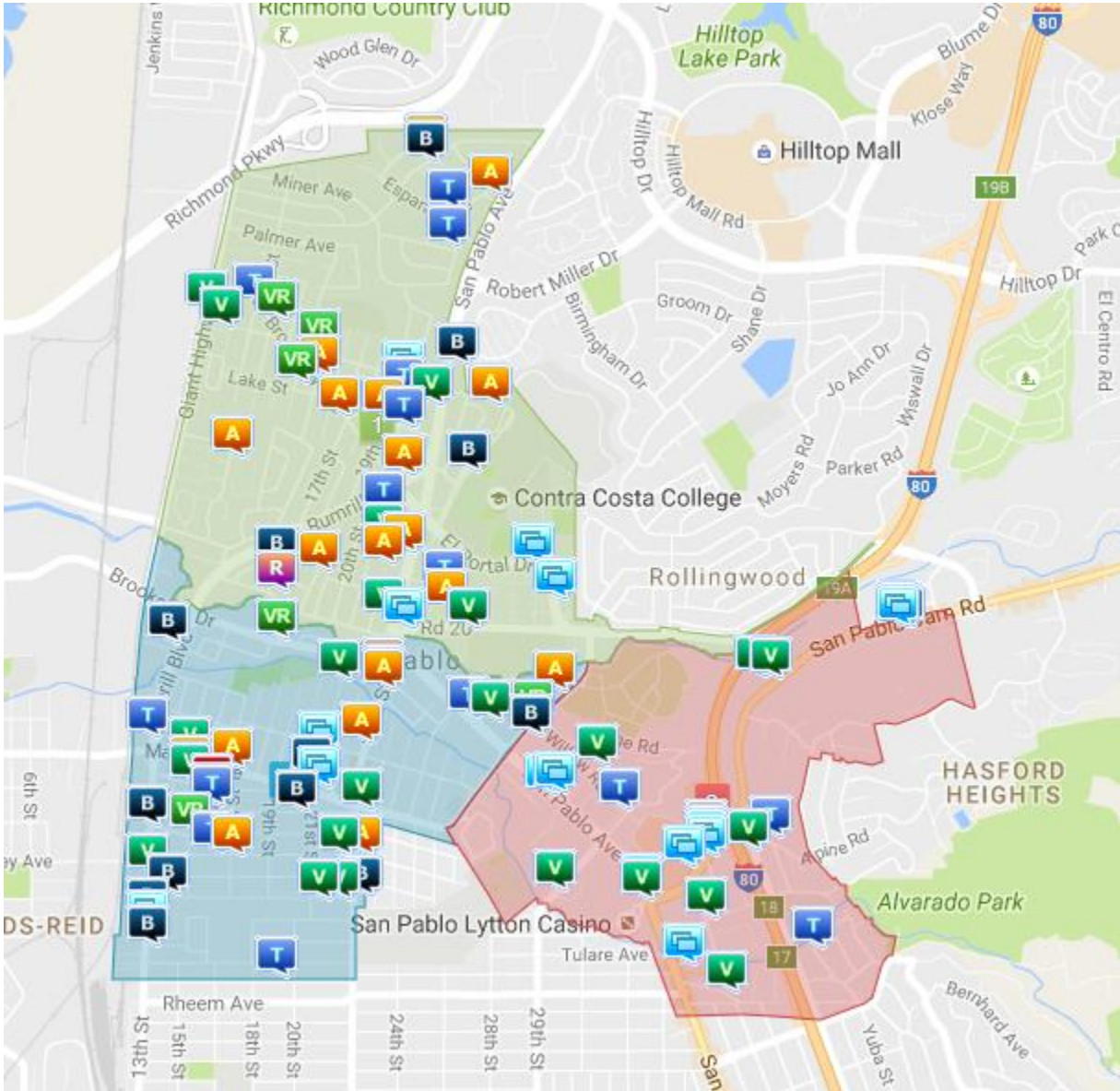


SAN PABLO POLICE DEPARTMENT

Monthly Statistics
September 2016



PART 1 CRIMES

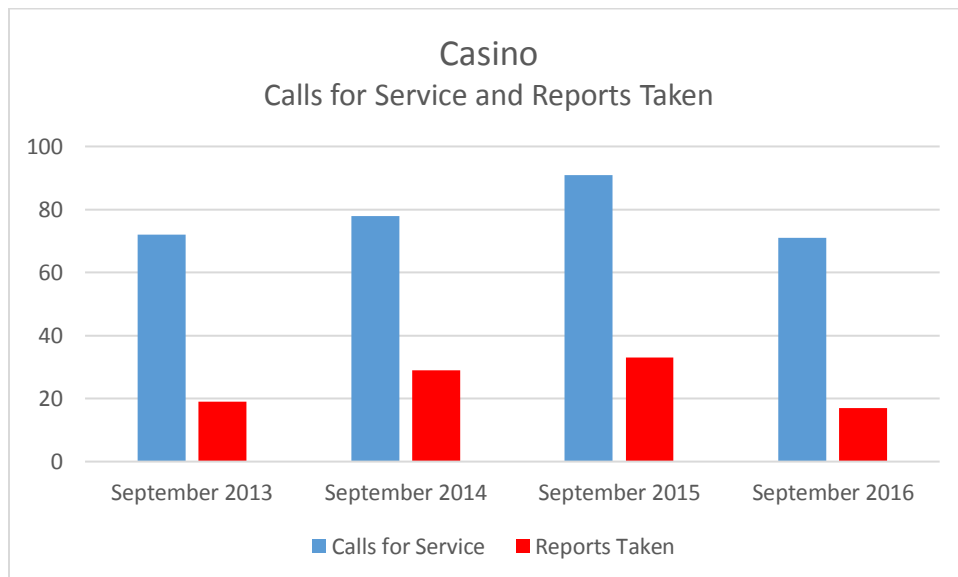
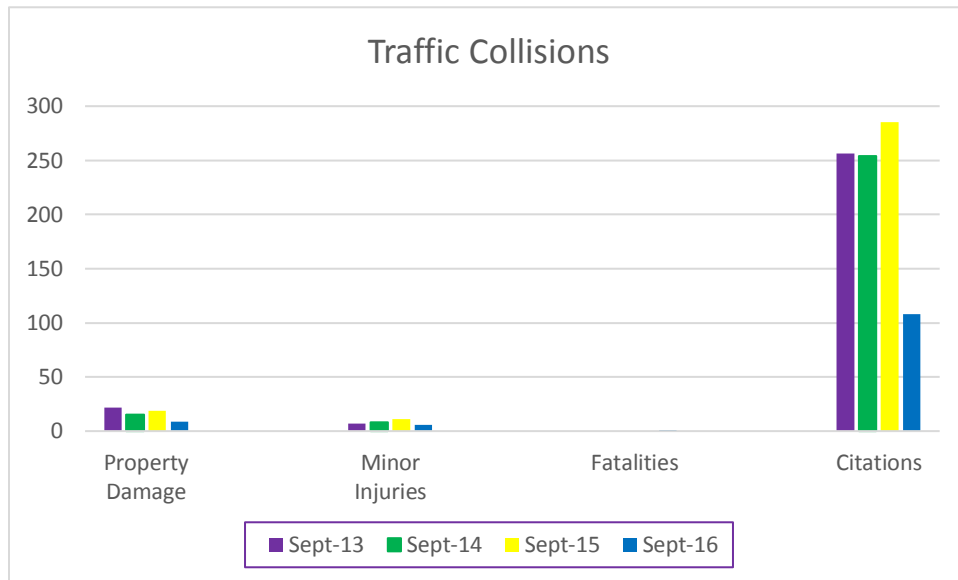


A = Assault **B** = Burglary **H** = Homicide **R** = Robbery **T** = Theft **V** = Stolen/Recovered Stolen Vehicles
Folders represent multiple Part 1 Crimes in the same reporting area; map is time sensitive and subject to change.
Rapes are not shown to preserve victim confidentiality.



SAN PABLO POLICE DEPARTMENT

Monthly Statistics
September 2016





SAN PABLO POLICE DEPARTMENT

Monthly Statistics
September 2016



Call for Service by Hour

From: 09/01/2016 To: 09/30/2016

Call Type: All

Hour	SUNDAY		MONDAY		TUESDAY		WEDNESDAY		THURSDAY		FRIDAY		SATURDAY		TOTAL	
	CALLS	%	CALLS	%	CALLS	%	CALLS	%	CALLS	%	CALLS	%	CALLS	%	CALLS	%
1	13	0.5	14	0.6	12	0.5	13	0.5	9	0.4	8	0.3	18	0.7	87	3.6
2	8	0.3	12	0.5	3	0.1	9	0.4	11	0.5	7	0.3	11	0.5	61	2.5
3	8	0.3	10	0.4	4	0.2	5	0.2	9	0.4	8	0.3	5	0.2	49	2.0
4	13	0.5	7	0.3	10	0.4	5	0.2	14	0.6	12	0.5	8	0.3	69	2.9
5	8	0.3	9	0.4	10	0.4	15	0.6	9	0.4	13	0.5	5	0.2	69	2.9
6	5	0.2	5	0.2	4	0.2	7	0.3	6	0.2	10	0.4	6	0.2	43	1.8
7	6	0.2	18	0.7	12	0.5	11	0.5	16	0.7	11	0.5	10	0.4	84	3.5
8	9	0.4	14	0.6	18	0.7	12	0.5	16	0.7	14	0.6	12	0.5	95	3.9
9	8	0.3	18	0.7	20	0.8	14	0.6	17	0.7	27	1.1	11	0.5	115	4.8
10	16	0.7	16	0.7	18	0.7	24	1.0	26	1.1	16	0.7	10	0.4	126	5.2
11	12	0.5	19	0.8	16	0.7	18	0.7	16	0.7	19	0.8	16	0.7	116	4.8
12	16	0.7	13	0.5	27	1.1	16	0.7	22	0.9	14	0.6	13	0.5	121	5.0
13	8	0.3	11	0.5	19	0.8	15	0.6	19	0.8	23	1.0	13	0.5	108	4.5
14	6	0.2	25	1.0	21	0.9	17	0.7	27	1.1	23	1.0	15	0.6	134	5.5
15	15	0.6	14	0.6	16	0.7	22	0.9	15	0.6	33	1.4	16	0.7	131	5.4
16	12	0.5	16	0.7	24	1.0	16	0.7	17	0.7	25	1.0	10	0.4	120	5.0
17	15	0.6	20	0.8	11	0.5	13	0.5	25	1.0	33	1.4	21	0.9	138	5.7
18	7	0.3	10	0.4	14	0.6	16	0.7	21	0.9	22	0.9	13	0.5	103	4.3
19	16	0.7	17	0.7	17	0.7	19	0.8	19	0.8	20	0.8	16	0.7	124	5.1
20	7	0.3	18	0.7	18	0.7	14	0.6	16	0.7	21	0.9	14	0.6	108	4.5
21	18	0.7	8	0.3	7	0.3	15	0.6	27	1.1	12	0.5	18	0.7	105	4.3
22	16	0.7	13	0.5	13	0.5	13	0.5	11	0.5	14	0.6	26	1.1	106	4.4
23	16	0.7	7	0.3	7	0.3	6	0.2	7	0.3	20	0.8	26	1.1	89	3.7

Hour	SUNDAY		MONDAY		TUESDAY		WEDNESDAY		THURSDAY		FRIDAY		SATURDAY		TOTAL	
	CALLS	%	CALLS	%	CALLS	%	CALLS	%	CALLS	%	CALLS	%	CALLS	%	CALLS	%
24	27	1.1	18	0.7	15	0.6	11	0.5	12	0.5	16	0.7	17	0.7	116	4.8
Totals	285	11.8	332	13.7	336	13.9	326	13.5	387	16.0	421	17.4	330	13.7	2417	100.0



SAN PABLO POLICE DEPARTMENT

Monthly Statistics
September 2016



Average Response Times

CALLS RECEIVED TO TIME OF ARRIVAL

	Priority 1 Calls	Priority 2 Calls	Priority 3 Calls	Priority 4 Calls
August 2016	4:24	9:50	7:48	17:50
September 2016	6:18	10:32	10:14	15:54

DISPATCHED TO TIME OF ARRIVAL

	Priority 1 Calls	Priority 2 Calls	Priority 3 Calls	Priority 4 Calls
August 2016	2:29	4:13	2:41	6:53
September 2016	3:32	4:56	3:32	6:46

COMBINED AVERAGE FOR ALL CALLS

CALLS RECEIVED TO TIME OF ARRIVAL

September 2015	12:13
September 2016	11:38

DISPATCHED TO TIME OF ARRIVAL

September 2015	4:30
September 2016	4:49

YEAR-TO-DATE AVERAGE

CALLS RECEIVED TO TIME OF ARRIVAL

	PRIORITY 1 CALLS	PRIORITY 2 CALLS	PRIORITY 3 CALLS	PRIORITY 4 CALLS
2015	5:57	9:30	7:24	17:32
2016	6:04	10:16	8:22	16:46

DISPATCHED TO TIME OF ARRIVAL

	PRIORITY 1 CALLS	PRIORITY 2 CALLS	PRIORITY 3 CALLS	PRIORITY 4 CALLS
2015	3:07	3:55	2:48	6:41
2016	3:06	4:45	3:09	6:45

Priority 1 Calls: Require an immediate police response to preserve life or apprehend a felony suspect (e.g.: in-progress assault).

Priority 2 Calls: Are "Priority 1" calls that are 5 to 15 minutes old at the time of call.

Priority 3 Calls: Require an urgent response (e.g.: in-progress disturbances, in-custody cases, property damage collisions, etc.).

Priority 4 Calls: Require a police response in a timely manner (e.g.: cold crime reports, civil standbys, etc.).