



SAN PABLO POLICE DEPARTMENT

Monthly Statistics
December 2016

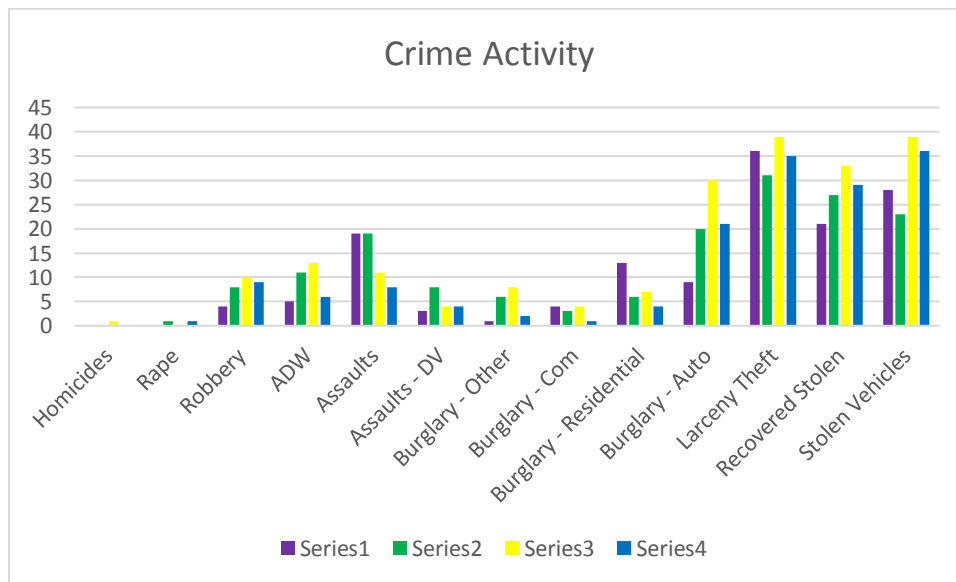


MAJOR CRIMES

	Dec 2013	Dec 2014	Dec 2015	Dec 2016	YTD 15	YTD 16	% Change
Homicides	0	0	1	0	2	1	-50%
Rape	0	1	0	1	8	22	175%
Robbery	4	8	10	9	112	89	-20.536%
ADW	5	11	13	6	107	98	-8.411%
Assaults	19	19	11	8	258	238	-7.752%
Assaults - DV	3	8	4	4	59	48	-18.644%
Burglary - Other	1	6	8	2	27	21	-22.222%
Burglary - Com	4	3	4	1	59	91	54.237%
Burglary - Residential	13	6	7	4	111	66	-40.541%
Burglary - Auto	9	20	30	21	279	227	-18.638%
Larceny Theft	36	31	39	35	448	545	21.652%
Recovered Stolen	21	27	33	29	332	355	6.928%
Stolen Vehicles	28	23	39	36	408	424	3.922%
YTD Crime Totals					2,210	2,225	0.679%

****Information is time sensitive and subject to change upon further analysis****

****Numbers are subject to change and may not match UCR reported stats****



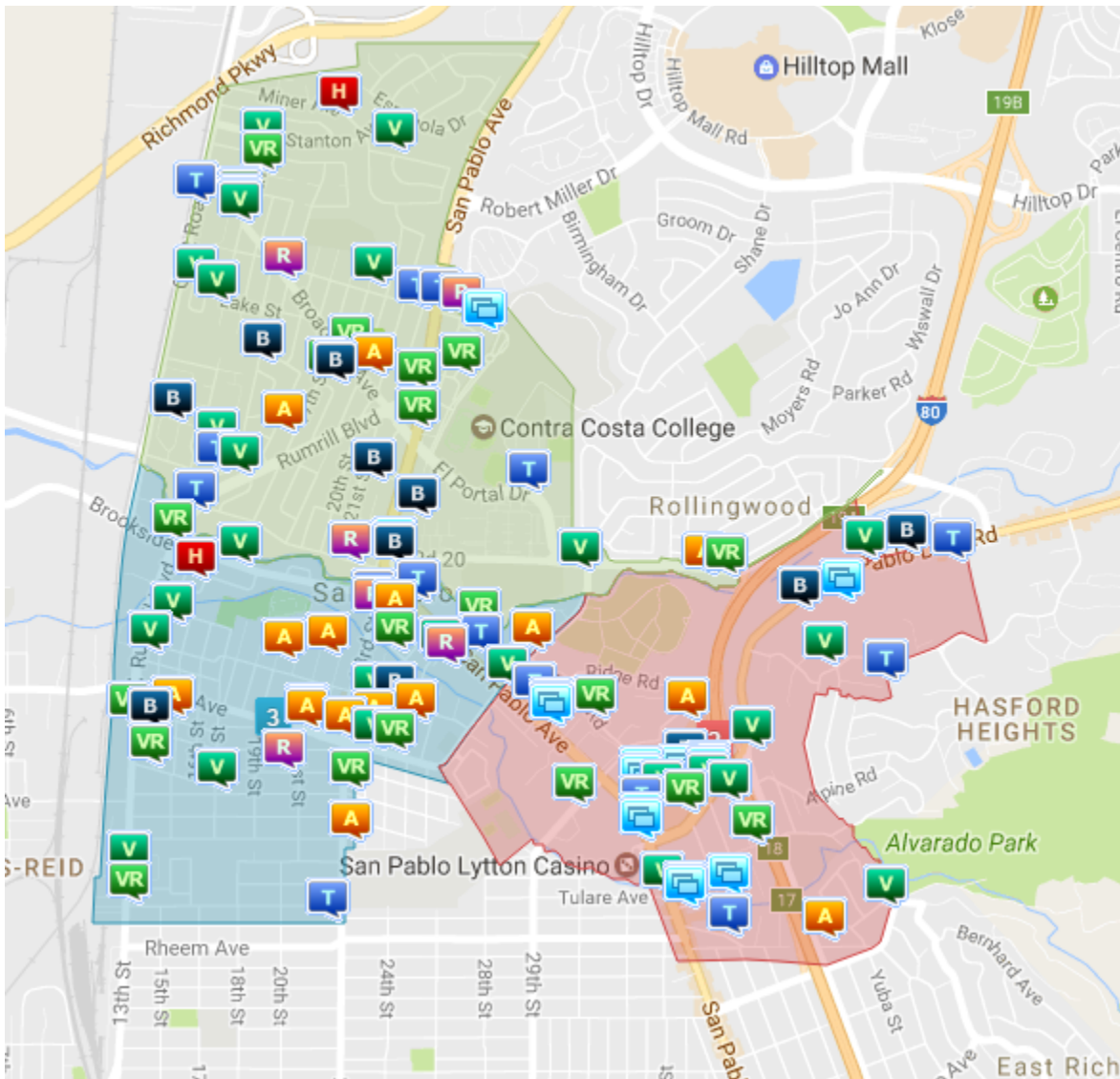


SAN PABLO POLICE DEPARTMENT

Monthly Statistics
December 2016



PART 1 CRIMES

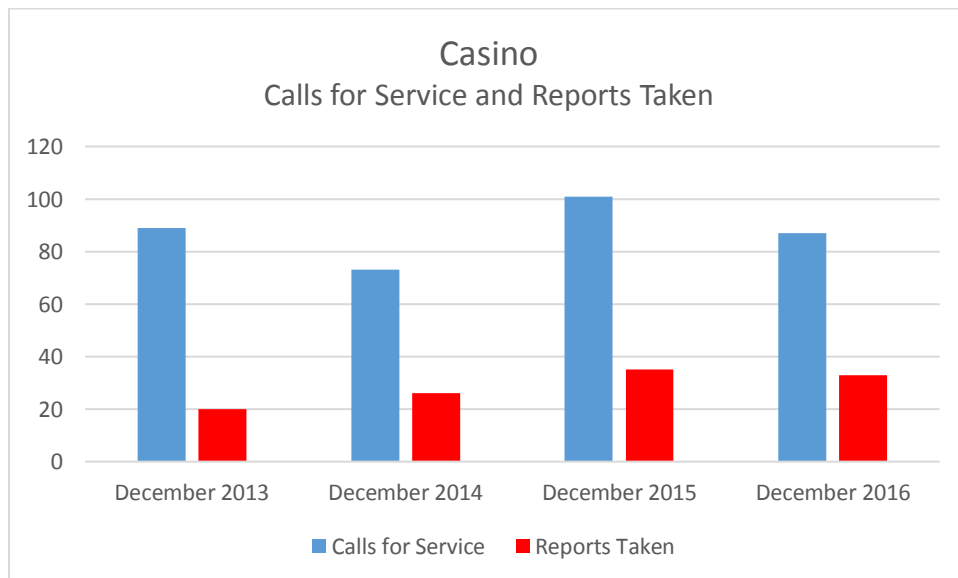
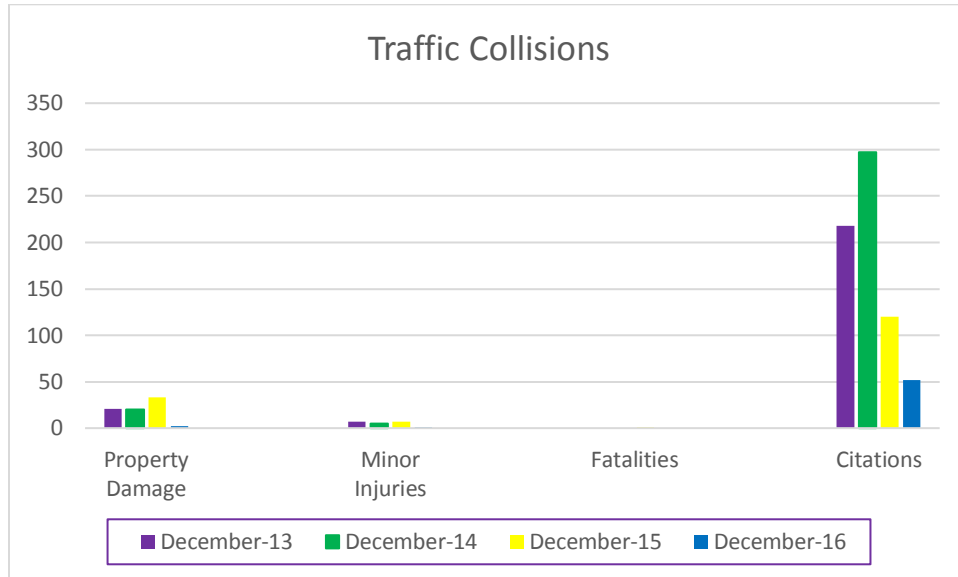


A = Assault **B** = Burglary **H** = Homicide **R** = Robbery **T** = Theft **V** = Stolen/Recovered Stolen Vehicles
Folders represent multiple Part 1 Crimes in the same reporting area; map is time sensitive and subject to change.
Rapes are not shown to preserve victim confidentiality.



SAN PABLO POLICE DEPARTMENT

Monthly Statistics
December 2016





SAN PABLO POLICE DEPARTMENT

Monthly Statistics
December 2016



Call for Service by Hour

From: 12/01/2016 To: 12/31/2016

Call Type: All

Hour	SUNDAY		MONDAY		TUESDAY		WEDNESDAY		THURSDAY		FRIDAY		SATURDAY		TOTAL	
	CALLS	%	CALLS	%	CALLS	%	CALLS	%	CALLS	%	CALLS	%	CALLS	%	CALLS	%
1	10	0.5	7	0.3	5	0.2	15	0.7	8	0.4	11	0.5	14	0.6	70	3.2
2	9	0.4	8	0.4	7	0.3	9	0.4	12	0.6	13	0.6	11	0.5	69	3.2
3	7	0.3	2	0.1	5	0.2	6	0.3	12	0.6	7	0.3	9	0.4	48	2.2
4	9	0.4	6	0.3	3	0.1	6	0.3	10	0.5	17	0.8	6	0.3	57	2.6
5	6	0.3	7	0.3	6	0.3	13	0.6	10	0.5	6	0.3	13	0.6	61	2.8
6	5	0.2	6	0.3	3	0.1	7	0.3	12	0.6	6	0.3	1	0.0	40	1.8
7	6	0.3	5	0.2	5	0.2	9	0.4	13	0.6	16	0.7	8	0.4	62	2.8
8	8	0.4	9	0.4	10	0.5	17	0.8	14	0.6	12	0.6	8	0.4	78	3.6
9	11	0.5	13	0.6	11	0.5	15	0.7	20	0.9	12	0.6	16	0.7	98	4.5
10	8	0.4	9	0.4	13	0.6	16	0.7	25	1.1	13	0.6	16	0.7	100	4.6
11	14	0.6	10	0.5	12	0.6	20	0.9	20	0.9	19	0.9	20	0.9	115	5.3
12	10	0.5	16	0.7	12	0.6	22	1.0	18	0.8	26	1.2	18	0.8	122	5.6
13	14	0.6	11	0.5	13	0.6	13	0.6	21	1.0	17	0.8	15	0.7	104	4.8
14	8	0.4	9	0.4	15	0.7	19	0.9	12	0.6	15	0.7	20	0.9	98	4.5
15	9	0.4	8	0.4	19	0.9	20	0.9	32	1.5	18	0.8	15	0.7	121	5.6
16	9	0.4	9	0.4	15	0.7	15	0.7	25	1.1	17	0.8	10	0.5	100	4.6
17	10	0.5	12	0.6	16	0.7	18	0.8	17	0.8	12	0.6	18	0.8	103	4.7
18	17	0.8	16	0.7	15	0.7	11	0.5	18	0.8	15	0.7	12	0.6	104	4.8
19	12	0.6	8	0.4	11	0.5	17	0.8	23	1.1	15	0.7	16	0.7	102	4.7
20	14	0.6	12	0.6	23	1.1	11	0.5	17	0.8	16	0.7	25	1.1	118	5.4
21	12	0.6	23	1.1	10	0.5	10	0.5	20	0.9	20	0.9	22	1.0	117	5.4
22	13	0.6	14	0.6	14	0.6	18	0.8	16	0.7	20	0.9	21	1.0	116	5.3
23	8	0.4	14	0.6	11	0.5	8	0.4	22	1.0	16	0.7	25	1.1	104	4.8
24	15	0.7	7	0.3	8	0.4	6	0.3	14	0.6	8	0.4	13	0.6	71	3.3
Totals	244	11.2	241	11.1	262	12.0	321	14.7	411	18.9	347	15.9	352	16.2	2178	100.0



SAN PABLO POLICE DEPARTMENT

Monthly Statistics
December 2016



Average Response Times

CALLS RECEIVED TO TIME OF ARRIVAL

	Priority 1 Calls	Priority 2 Calls	Priority 3 Calls	Priority 4 Calls
November 2016	5:27	9:59	9:12	18:38
December 2016	6:08	12:32	10:46	18:14

DISPATCHED TO TIME OF ARRIVAL

	Priority 1 Calls	Priority 2 Calls	Priority 3 Calls	Priority 4 Calls
November 2016	3:08	4:32	3:51	7:07
December 2016	2:50	5:03	4:22	6:55

COMBINED AVERAGE FOR ALL CALLS

CALLS RECEIVED TO TIME OF ARRIVAL

December 2015	11:42
December 2016	12:51

DISPATCHED TO TIME OF ARRIVAL

December 2015	4:46
December 2016	5:07

YEAR-TO-DATE AVERAGE

CALLS RECEIVED TO TIME OF ARRIVAL

	PRIORITY 1 CALLS	PRIORITY 2 CALLS	PRIORITY 3 CALLS	PRIORITY 4 CALLS
2015	5:46	10:14	9:08	18:25
2016	6:06	10:38	8:54	17:21

DISPATCHED TO TIME OF ARRIVAL

	PRIORITY 1 CALLS	PRIORITY 2 CALLS	PRIORITY 3 CALLS	PRIORITY 4 CALLS
2015	2:44	4:20	3:46	6:57
2016	3:11	4:48	3:24	6:54

Priority 1 Calls: Require an immediate police response to preserve life or apprehend a felony suspect (e.g.: in-progress assault).

Priority 2 Calls: Are "Priority 1" calls that are 5 to 15 minutes old at the time of call.

Priority 3 Calls: Require an urgent response (e.g.: in-progress disturbances, in-custody cases, property damage collisions, etc.).

Priority 4 Calls: Require a police response in a timely manner (e.g.: cold crime reports, civil standbys, etc.).